



**SEPTEMBER
16-18, 2011**

**HERITAGE RESERVATION
FARMINGTON, PA.**

MOUNTAINFEST
LAUREL HIGHLANDS COUNCIL



EVENT GUIDE

VERSION 6.0

9/13/2011

Registration Information

Advance registration is required for this event. The participant fee for youth and adults is \$25 regardless if camping or a day visitor.

Participants may select one of three registration types; Heritage Wall Tent, Unit Supplied Tent or Saturday Only.

Meals are available all day Saturday and Sunday morning for \$5 per meal. Saturday dinner is included in your participant fee.

Registration can be completed online at www.heritagereservation.org/mountainfest or by calling Michael Crane on (412) 325-7921.

All registration, payments and changes must be completed by Wednesday, September 7, 2011.

Required Forms

The following forms are required to ensure a safe weekend for all participants.

Tour Permits

Tour Permits are not required for MountainFest, a council run event for which you have pre-registered. Please plan your trip safely and follow the BSA guidelines. This has been changed from a previous version stating they were required.

Annual Health and Medical Record

A copy of the BSA health form is required for both youth and adults. The health forms will be collected as part of the check in process. **The health form copies will not be returned to the unit.**

Permission Slip

As part of the BSA policy, a permission slip should be collected by the unit leader prior to the event.

Unit Roster

A roster listing all youth and adults will be required at check in time. Please ensure you have a copy to the event staff to keep and one for the unit. A blank form is available at www.heritagereservation.org/mountainfest

Communication

Each unit needs to provide two unit leaders' cell phone numbers at registration. We encourage all Scouts to bring their cell phones for contact purposes. All cell phone users should utilize the text feature during the event.



Check-In and Arrival

The registration process will be completed in the Sub Camp on Friday night. Units will meet with members of the Registration and Sub Camp Staffs to review Participant Registration, Annual Health and Medical Records and campsite assignment.

Registration Receipt

Please bring your online registration receipt to expedite the check-in process.

Unit Roster

A roster listing all youth and adults will be required at check in time. Please ensure you have a copy to the event staff to keep and one for the unit. A blank form is available at www.heritagereservation.org/mountainfest

Annual Health and Medical Record

A copy of the BSA health form is required for both youth and adults. The health forms will be collected as part of the check in process. The health form copies will not be returned to the unit. Parts A and B will be required. A doctor's physical is not required for this event. Find the form at: www.heritagereservation.org/mountainfest

Arrival Time

Units camping should arrive on Friday September 16. Check in will begin no earlier than 2 p.m. Units must arrive by 10 p.m. Near the main entrance to Heritage Reservation you will be directed to your Sub-Camp where registration will take place in the parking lot as well as unloading of gear.

Friday Late Arrivals

Camping youths arriving late should be accompanied to the Sub Camp by their parent and the Sub Camp Staff will assist in getting them connected with the unit.



Campers Arriving Saturday

Campers that cannot arrive until Saturday shall board a bus to their Sub Camp. Their gear will be left at Sub Camp headquarters until evening. Units expecting Saturday arrivals should notify the Sub Camp staff and provide the staff with the names of these individuals, the Annual Health and Medical Records, expected arrival time, and previously issued wristbands with unit number.

Saturday Only Participants

Units arriving for the day on Saturday, September 17 will be directed to parking and then to Keystone Lodge near the main entrance for check-in. Saturday arrival and registration for visitors and participants begins at 7:30 a.m.



Vehicles and Parking

The following vehicle and parking rules will be enforced at MountainFest.

Trailers

Units may bring gear in locked trailers beginning Wednesday, September 14. One non-powered unit may be left in designated trailer parking areas of the Sub Camp (these will be near the camp gates so pack lightly). All other vehicles will be parked in one of the larger parking lots.

Vehicles

Only one vehicle (delivering gear) per unit will be allowed to drive past the parking lot to the Trailer and Equipment Area at a time. Vehicles delivering gear to Sub Camps shall have 30 minutes to drive to the Trailer and Equipment Area, unload or load and leave the area. Trailers can be left in the area.

All other vehicles transporting participants will be directed to the parking lots. Units that arrive later will be able to drop Scouts and gear off closer to the Sub Camp but will need to move the vehicle to parking lots further away.

All vehicles will be parked in designated areas only. Vehicles or trailers which are improperly parked may be towed at the owner's expense. Your cooperation is appreciated.

Traffic Safety

Please enter and exit Heritage Reservation from designated roadways. Remember that with the number of vehicles and pedestrians using the roadways, traffic flow is extremely important in allowing everyone to get where they need to go.

Traffic inside the Sub Camps will be limited to camp vehicles only. Traffic on the main roads at MountainFest will be limited to buses and immediate unloading of vehicles with unit gear. All vehicles must be moved to a designated parking area promptly after unloading.

Persons with Physical Disabilities

These individuals may drive their personal equipment to and from the site. A disability access pass will be required and can be requested from the Parking Staff. The vehicle will need to be removed from the Sub Camp and parked in the lot for the weekend. Due to the number of participants on foot and the in camp bus routes, the vehicle will NOT be allowed to be driven during the event on Saturday.



Health and Safety

Annual Health and Medical Record

A copy of the BSA health form is required for both youth and adults. The health forms will be collected as part of the check in process. The health form copies will not be returned to the unit.

Wristbands

There will be several different colored wristbands. One for each of the Sub Camps, day visitors and staff. Guests without a wristband will be escorted to one of the Sub Camp offices or Keystone Lodge to properly check-in or will be asked to leave the property.

Unit leaders are strongly encouraged to write the unit number of the individual on the wristband during check-in. This will aid staff in finding the correct Annual Health and Medical Record in the case of an emergency.

Buddy Tags

Each participant will need to have a buddy tag to participate in aquatics activities at MountainFest. The Buddy Tag shows the participants swimming ability. BSA aquatics requirements will be followed and unit leaders will need to have a list of swimming abilities for their participants. Any swim classification done within the last year can be used to determine the ability level. Blank Buddy Tags will be provided at check in.

First Aid

First Aid services will be available at all of the Sub Camp Headquarters as well as in mobile units. This service is provided by personnel approved by our Camp Physician. All injuries must be reported to unit leaders and the First Aid stations.

Larger Emergencies

If there is an emergency where the injured party cannot be moved or cannot make it to a Sub Camp Headquarters, then send a runner or call the emergency phone number. Emergency phone number at MountainFest is: (724) 329-8534 Heritage Reservation Office. Our staff will send a mobile unit to your location and contact 911 if necessary. Do not call 911 directly as with an event this large an ambulance can quickly get lost or confused.

Emergency Communication

Emergency phone number at MountainFest is: (724) 329-8534 Heritage Reservation Office. If emergency contact must be made with an overnight participant, the following must be provided:

- Name of person to be contacted
- Unit Number
- City & District where the unit meets

Fire Protection

All units are to follow the fire safety guidelines throughout the event. Be sure to have fire-fighting equipment and/or some other fire extinguisher device nearby in case of emergency. Posting a fireguard chart makes good sense. Cooking stoves must be 20' away from all tents and no canopy above the cooking area is allowed.

Campfires

Campfires are permitted in designated fire rings only. Each campsite has several and units may need to share. Please do not build new fire rings.

Lost and Found

Lost and found services are located at any one of the Sub Camp Headquarters. Lost person(s) should report to an adult who in turn will escort the lost Scout to the nearest Sub Camp Headquarters.

Bus Services

On Saturday buses will run between the Sub Camps to take you to the different program areas and the evening program. Bus stops will be labeled on the final map handed out at check-in.

Buses on Saturday will begin at 8 a.m. will run continuously between Sub Camps until the evening show. Service will resume afterwards to return campers to the Independence Sub Camp.

ORDER OF THE ARROW SERVICE CORPS

Serve two hours at MountainFest and receive the first-issue Lodge flap of Allolahak Menewi

Sign up at:
heritagereservation.org/mountainfest

MOUNTAINFEST
LAUREL HIGHLANDS COUNCIL

MountainFest Arrowcorps

The OA has been asked to participate in MountainFest - Please consider volunteering to serve on the Camporee Arrowcorps to help support the event.

There will be many service opportunities in Program Areas (including aquatics, fishing, shooting sports, climbing, Scout skills, camping, cooking and much more), Sub-Camp support and Logistics. The Lodge is looking for Youth and Adult Arrowmen to volunteer for 2 hours of cheerful service; what better way to meet new brothers. All Arrowmen volunteering two hours will receive a first issue lodge flap.

Please register to serve at the event page: www.heritagereservation.org/mountainfest select Order of the Arrow or contact Michael Crane on (412) 325-7920.

Policies & Procedures

Leadership Requirements

In keeping with BSA policies, units must follow the minimum two-deep adult leadership requirements. At least one adult must be registered with the BSA, and one adult must be at least twenty-one years old.

Buddy System

Please enforce the Buddy System at MountainFest. It is expected that all youth participants will remain on the Heritage Reservation facility throughout the weekend and will not leave the grounds unsupervised. The subcamp director must be notified whenever a youth participant leaves MountainFest grounds during their stay.

Youth Protection

All units will follow Youth Protection Guidelines for two-deep leadership during this event. Cub Scout dens coming for the day need at least two deep leadership, and typically 1:5 adult-to-youth ration is preferred.

Insurance

Comprehensive general liability insurance coverage is carried by the BSA. Members of the Laurel Highlands Council have accident and illness insurance secondary to their personal policies.

Uniforming

MountainFest is a uniformed activity for all registered youth and adults. An activity uniform (Scout T-shirt) is encouraged throughout the event. The field uniform (scout shirt) is required for the Arena Show on Saturday evening. The uniform affects the appearance of the event and encourages good behavior.

Behavior

Conduct and appearance in route to and from and while at the event will be observed and judged by many. The Scout Oath and Law are the standards of behavior for all participants. The responsibility for proper conduct and appearance is that of all participants and especially their unit leaders.

Tobacco

No smoking or chewing of tobacco in the presence of Scouts. Leaders who need to smoke should designate a secluded area away from program activities and sub camps. Check with your sub-camp director for specific locations.

All buildings and structures at Heritage Reservation are tobacco free.

Controlled Substances

The possession and/or use of any controlled substance or alcoholic beverage by youth or adult participants on the grounds are strictly prohibited. Use will be grounds for immediate dismissal from the event.

Communication

Each unit needs to provide two unit leaders' cell phone numbers at registration. We encourage all Scouts to bring their cell phones for contact purposes. All cell phone users should utilize the text feature during the event.

Prohibited Items

The use of all-terrain vehicles, mopeds, motorcycles, etc, is prohibited at MountainFest. In addition, participants should leave skates, skateboards and bikes at home. Powered wheelchairs for persons with physical disabilities are allowed.

Quiet Hours and Lights Out

Quiet Hours will be observed from 10:00 p.m. to 7 a.m. Friday and Saturday night. Please respect your neighbors and allow them the time to get their rest. Lights out is at midnight Friday and Saturday night.

Camping Information

Participants at MountainFest have a few different options for camping during the weekend.

Cub Scout Packs are encouraged to utilize the Heritage Reservation canvas wall tents, which will be set-up in Camp Independence. These are the same spacious wall tents, complete with bunks, mattresses and floorboards, that serve our summer campers. All nine campsites will be used.

Boy Scout Troops and Venturing Crews are encouraged to bring their own tents to be set up in Camp Freedom and Camp Liberty. Each camp will act as a sub-camp, with units camping jamboree-style to maximize the space available. As campsites fill, additional space in each camp will be able to be utilized.

Multi Unit Camping

Packs, Troops and Crews who share equipment and wish to camp together may make those arrangements with the sub-camp chiefs, and all available opportunity to accommodate each request will be made.

Recreational Vehicles

Camping trailers and other RVs will not be allowed at MountainFest.

Campsite Information

Campsites at Heritage vary greatly in size. In the summer they hold between 25 and 75 campers. For a weekend event like MountainFest less space is needed than at a week long camp. As such we are projecting that sites will hold between 40 and 125 campers.

To maximize the available camping area, units will need to share campsites with other units. Please be considerate of others who may share your site and their later arrival.

Campsites will be assigned based on the number of campers registered and no changing is allowed. Units will be mixed with units from other districts in their campsite or neighboring campsites to foster new relationships.

All tents and cooking areas must be kept within the identified boundaries. Units are responsible for their own tents and tarps. Units that selected Heritage Wall Tents will be provided with a tent and two cots for each two people.

No power is available at the campsites. Potable water and rest room facilities will be available.

No digging of holes in the campsites because of buried water and utility lines. Normal tent pegs are allowed (8" or less).

Minimal Gear

UNITS ARE URGED TO BRING MINIMAL GEAR FOR THE WEEKEND. Space and time will be extremely limited for the weekend, and units should plan appropriately.

Cooking

Cooking in the campsites is permitted. Propane stoves or the open fire in pre established fire rings are permissible. Cooking stoves must be off the ground to prevent damage to the ground. Cooking stoves must be 20' away from all tents and no canopy above the cooking area is allowed.

Campfires

Campfires are permitted in designated fire rings only. Each campsite has several and units may need to share. Please do not build new fire rings.

Sanitation and Utilities

Water

Potable water is available in all camp sites for cooking, cleaning and drinking. Please do not wash dishes in the latrine areas.

Restrooms

Pit toilets are available in all camp sites. You will likely be sharing your latrine so please clean up after yourself.

Portable latrines are located throughout the program areas and near the evening show.

Flush toilets are available in the dining halls and some shower houses. Please keep in mind that there are not enough flush toilets to accommodate everyone.

Showers

Several shower houses are available in each of the Sub Camps. Please be observant of youth/adult and male/female restrictions.

Garbage

There will be dumpsters available for your garbage. They will be near the dining halls and parking areas. Units should come prepared to take their garbage to the dumpsters. Please do not leave it in the campsites or program areas for staff to clean up.

We should all take pride in keeping the camping and activities areas litter-free. Please be prepared to leave your camping area cleaner than when you arrived. Remember: LEAVE NO TRACE.

Electricity

No power is available at the campsites but charging of cell phones for unit leaders and breathing machines can be done in the Sub Camp Headquarters.



Boy Scouts of America, Laurel Highlands Council

Recommended Equipment

Unit Equipment

Suggested common camping equipment (this is not a complete list):

- Tents
- Rain Tarps/Flies (remember the site area limitations)
- Preparation/Dining tables (picnic tables will be limited in campsites)
- Troop/Patrol/Crew Kitchens
- Cook Kits/Pans
- Chefs Tool Kits
- Dishwashing Equipment
- Detergent, Sanitizer
- Plates and Utensils
- Food for all meals unless you plan on buying your meals.
- American/Unit/Patrol Flags
- Lanterns
- First Aid Kits
- Drinking Water (water for refilling jugs will also be available on site)
- Garbage Bags (Pack It In, Pack It Out - LEAVE NO TRACE)

Personal Equipment

Suggested personal camping equipment (this is not a complete list):

- Scout Field Uniform
- Scout Handbook
- Hand Sanitizer
- Rain Coat or Poncho
- Flashlight
- Appropriate Outerwear (Jackets/Sweaters/Sweatshirts)
- Hat/Cap
- Gloves
- Extra Pair of Shoes/Footwear
- Underwear & Socks
- Sleepwear
- Sleeping Bag and/or Blankets (be prepared for weather)
- Mattress/ground cloth/foam pad/Pillow
- Toiletries (toothbrush, toothpaste, soap, etc.)
- Towel
- Sunscreen (you may be in direct sunlight all day)
- Sun Glasses
- Scout Knife or Pocket Knife
- Spending Money
- Camp Chair (Not permitted at the Stage Show)
- Watch
- First Aid Kit
- Camera
- Notebook/Pencils/Pens
- Mess Kit
- GPS navigation hand-held unit if you plan to participate in geocaching activities.



Check-Out Information

To Speed your departure please pay attention to these points.

Saturday Departure

To ensure your safety and that of your youth, no camping unit will be permitted to break camp on Saturday. Day participants should use extreme caution in their travels home. If you are too tired to drive, don't. Stop by Keystone Lodge and we can accommodate your overnight stay.

Sunday Departure

Departure on Sunday will be similar to check in on Friday. Scouts will haul their gear from the Sub Camp to the trailer parking and load their gear into their trailer or gear vehicle and then proceed to the parking lot and their vehicles for home.

Campers may haul unit equipment from the site beginning any time after dawn on Sunday, September 18.

As per check-in, only one vehicle per unit will be allowed to drive from the parking lot to the Trailer and Equipment Area at a time. Vehicles removing gear from the Sub Camps shall have 30 minutes to drive to the Trailer and Equipment Area, load gear, and leave the area.

When the unit has had its campsite area inspected and approved by one of the sub-camp staff, it may depart from the grounds.

Persons with physical disabilities may drive their personal equipment to and from the campsite.



MountainFest Event Guide

Meal Service

Meals are available in our dining halls at Camp Freedom and Camp Independence. Each meal costs just \$5 and saves you the headache of meal preparation and cleanup. Saturday dinner is included in the registration for all participants.

You can even choose which meals you would like to partake in. Meal must be selected during the registration period prior to September 7.

Tickets will be distributed to units that purchased meals during check in. The unit will be responsible to see that they get to the right people. You must have a ticket to eat.

Meals are not for sale at MountainFest - they are pre-purchase only.

Meal Schedule

All meals will be served cafeteria style and will have a two hour meal window.

- Saturday Breakfast: 7 to 9 a.m.
- Saturday Lunch: 11 a.m. to 1 p.m.
- Saturday Dinner: 5 to 7 p.m.
- Sunday Breakfast: 7 to 9 a.m.

Menu

Saturday

- Breakfast: French Toast, sausage, hashbrowns, cereal, juice/milk/coffee
- Lunch: Cheeseburgers, tator-tots, peaches, juice/coffee
- Dinner: Spaghetti and meatballs, bread stick, mixed salad, cake, juice/milk/coffee

Sunday

- Breakfast To Go: Muffin, yogurt, apple sauce cup, cereal, milk/juice/coffee

Special Meals

Due to the nature of feeding 2000+ campers in two dining halls it does not allow for special meals. If you typically need a special meal (gluten free, peanut, etc.) our recommendation is to bring your own. Thank you for your understanding.

Trading Post - Scout Shop

Our camp Trading Posts will be open to serve you all weekend. They are well stocked with custom MountainFest T-shirts and Council Shoulder Strips and standard Laurel Highlands Council Shoulder Strips. We carry a wide selection of Heritage Reservation custom items. These include T-shirts, hats and camp items like flashlights, batteries and other essentials.

The average participant can spend as much as \$40 while at the event. The amount each youth actually spends will depend upon their personal needs.



MountainFest Arena Show

Saturday night at MountainFest will cap off the weekend with an arena show on the Freedom Dining Hall hill. For the first time, youth and adults from all corners of the newly formed Council will come together to enjoy an evening of fun and fellowship.

A presentation of the new council flag, unveiled by the Council President and Order of the Arrow Chief, will be followed by "Stereotype", a local band and entertainment throughout the night.

A rededication ceremony, for all age groups will also be led, reminding us all of our shared purpose and sense of adventure.

Different presentations, led by the Order of the Arrow, will also help us to remember the formation of the Laurel Highlands Council, while enjoying world-class entertainment during the evening.

The show will end with a fireworks extravaganza, capping off a weekend filled with amazing program, new friendships and recommitted bonds to the ideals of Scouting.

Please bring a towel or blanket to sit on at the arena show as chairs will not be permitted. A handicap designated area is available on the dining hall porch.

Religious Services

Several religious services will be available at 7:30 p.m. just before the Arena Show on Saturday. Each of the services will be in an area near the Arena. These will include but are not limited to: Catholic, Jewish, Protestant and Inter-Faith.

- Catholic - Freedom Dining Hall
- Protestant - Arena Show area
- Jewish - Freedom Program Hall
- Inter-Faith - Freedom Nature Shelter

MountainFest Totem

Upon arrival, each participant, youth and adults will be given a Totem, as well as a supply of colored beads; each District will have their own color bead.

To help commemorate the formation of the Laurel Highlands Council, participants are asked to meet members from each District, and trade beads, completing the spectrum of beads on their own Totem.

Additionally, participants can go to the Handicraft areas of each camp to further customize their Totems, making them a fond reminder of MountainFest for years to come.

MountainFest Schedule

Friday

2 - 10 p.m.	Arrival, check-in, campsite setup (no Friday dining hall meals)
4 - 10 p.m.	Trading Posts open
10 p.m.	Quiet hours until 7 a.m.
12 a.m.	Lights Out

Saturday

7 - 9 a.m.	Breakfast in dining halls
7:30 a.m.	Saturday Participant arrival and check-in at Keystone
8:00 a.m.	Bus Service Begins
8:30 a.m.	Trading Posts Open
9 a.m. - 4:30 p.m.	Program areas open in Liberty and Independence
11 a.m. - 1 p.m.	Lunch in dining halls
3 - 6 p.m.	OA Elections
5 - 7 p.m.	Dinner in dining halls
5:30 - 7:15 p.m.	Catch the bus to Camp Freedom for Religious Service and the Arena Show
7:30 p.m.	Religious Services
8:00 p.m.	Arena Show
10 p.m.	Return to campsites
10 p.m.	Quiet Hours until 7 a.m.
12 a.m.	Lights Out

Sunday

7 - 9 a.m.	Breakfast in dining halls
7:30 - 10 a.m.	Trading Posts Open
7:30 - 10 a.m.	Pack up, clean campsite, check out, departure

Winter Weekends at Heritage Reservation

Come and enjoy the unparalleled beauty of the Laurel Highlands this winter at Heritage Reservation.

Four Cub Scout weekends offer parent and son teams the chance to experience cross-country skiing, broomball, sledding, snow shoeing and more. Cub Scouts and their families are also invited to the Nemaocolin Woodlands Ski and Snowboard Days throughout January and February.

Heritage Reservation now offers a Boy Scout Winter Weekend. Patrols, Troops or parent and son teams are welcome to come and enjoy a variety of winter sports. Members of the Order of the Arrow also have the opportunity to attend Winterfest and all Boy Scouts and their are invited to the Nemaocolin Ski and Snowboard Days.

Venturers are invited to come and kick back at the Venturing Getaway Weekend. Spend a weekend at Heritage Reservation with world-class skiing just down the road at Nemaocolin Woodlands. Venturers and their families are also welcomed to Nemaocolin Woodlands Ski and Snowboard Days.

Program features

Each weekend includes a variety of winter activities, including:

- Sledding
- Broomball
- Giant Slingshots
- Snowshoeing
- Cross country skiing
- Campfires
- Scavenger Hunt

Cost

The package includes lodging Friday and Saturday night, Friday snack, all meals on Saturday, breakfast Sunday, plus use of camp equipment and costs only \$50. Participants stay at the Eagle Base Conference Center, each home includes beds, heat, bathrooms and showers.

Heritage Reservation:

January 6-8, 2012 - Venturing Getaway Weekend
January 14-16, 2012 - Winter Weekend I (Cub Scouts)
January 20-22, 2012 - Winter Weekend II (Cub Scouts)
January 27-29, 2012 - Order of the Arrow Winterfest
February 3-5, 2012 - Winter Weekend III (Boy Scouts)
February 10-12, 2012 - Winter Weekend IV (Cub Scouts)
February 17-19, 2012 - Winter Weekend V (Cub Scouts)

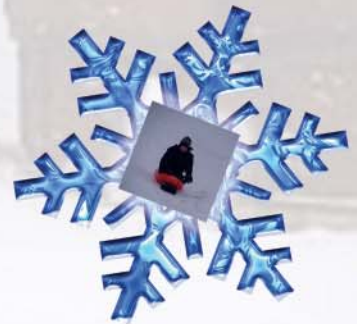
Nemaocolin Woodlands Ski and Snowboard Days:

Participants can stay at Nemaocolin Woodlands, or come up and ski, snowboard and snow tube for the day:

- January 7, 2012
- January 8, 2012
- January 21, 2012
- January 22, 2012
- February 4, 2012
- February 5, 2012
- February 25, 2012
- February 26, 2012

Information and Registration

More information and online registration can be found at www.heritagreservation.org/winter



MountainFest Program

There will be more program than any one Scout can complete in a day. Participants will find most program spread throughout Camps Liberty and Camp Independence. Programs will include but are not limited to:

Fishing

Over six miles of shoreline await you at Heritage Reservation. Multiple fishing docks are scattered around the perimeter of Lake Courage, or follow the Courage Trail to find the perfect spot. Lake Courage is home to bass, bluegill, sunfish and catfish. No live bait (aside from worms).

Shotgun Shooting

Older Boy Scouts and Venturers can head to our shotgun range at Discovery to experience an entirely different type of shooting. Clay birds go flying past, propelled from our mechanical throwers, as you try to hit as many as possible.

Archery

Archery for every age level! Cub Scouts and Webelos have the chance to shoot at the Camp Independence Archery Range, and then test their skills at Action Archery: a trail that weaves its way through the forest with shooting stations. Boy Scouts and Venturers can hone their skills with our compound bows.

BB Guns

Cub Scouts can shoot at our BB gun range. Trained instructors will be on hand to help you hit the bulls eye!

Cooking

Demonstrations and interactive activities will be going on throughout the day. Stop by to test your culinary craftiness and sample some delectable desserts. Find some new recipes to take back to your unit!



Pistols

Venturers can shoot our .22 pistols at our range, working on marksmanship.

Rifle Shooting

Boy Scouts and Venturers can join the competition at our Rifle Ranges. .22 Rifles will be provided, and our trained instructors will be there to help you with your aim and increase your score.

BMX

Webelos can pedal their way around our BMX track, complete with ramps and other obstacles. Bikes and helmets are provided, just show up and tackle the course!

Kayaks

Hop in a kayak and paddle around Lake Courage. Take the opportunity to examine some of the harder to reach areas of shoreline and Latham's Cove.

Mountain Biking

Boy Scouts and Venturers can take our mountain bikes around Lake Courage. See beaver lodges, Point Spear, Latham's Cove and bridge our dam.

Fire Building

Just like on Survivor, put your fire building skills to the test. Race to see who can light and maintain a fire the fastest, and with as little material as possible.

Canoe

Take our aluminum canoes out onto the waters of Lake Courage. Paddle around the lake and practice for the Iron Man competition next summer.

Scout Skills

Put your Scout skills to the test. Practice and compete in various areas including pioneering, orienteering, first aid and nature identification.

Swimming

Swimmers of all ability groups are invited to Lake Courage to take a dip in the cool waters. Dive off our floating dock, or just relax on the sandy beach.

Sailing

Take out our sailboats on 270 acres of water: your opportunity to sail all of Lake Courage. Let the winds guide you around the beautiful lake as you take in the scenery that only the Laurel Highlands can offer.

Climbing

Try to reach the top of our 30-foot climbing tower. Three different sides, two with varying degree of difficulty, provide challenges for everyone. Webelos can climb our 30-foot mobile climbing tower and tackle the bouldering wall and course.

Rappelling

Boy Scouts can rappel down our climbing tower, learning the basics of what is for many, a life-long passion.

Project C.O.P.E.

Join members of your patrol, or make new friends as you work your way through our Project C.O.P.E. course, 20 feet in the air. Give the initiative games and low challenge elements a try too!

Sponge Wars

It's an all-out battle at the fort! Grab a sponge and protect the fort from invading forces. Two stories of action and adventure!

Handicraft

Stop down to our Handicraft areas to work on leather and woodcarving projects. Spend some time personalizing your MountainFest totem necklace to commemorate this special event!



MountainFest Staff Specifics

Staff Registration

Each staff member needs to register as staff in your area of service as well as select meals and staff T-shirt size. This can be done by visiting www.heritagereservation.org/mountainfest and selecting "Staff Registration". The participant fee is waived for staff but meals are at your expense.

Part Time Staff

If you are volunteering for a shift or two, but plan to spend most of your time enjoying the event with your unit or family, you should register for the event and not as a staff member.

Staff Arrival and Departure

You may arrive as early as 8:00 am on Wednesday September 14. Wednesday meals are on your own. Please arrive no later than 12:00 pm on Friday, September 16. We are planning to have staff depart after 3:00 pm on Sunday. This will allow us to see the evening show Saturday and clean up our areas and help move program equipment to our storage locations.

Staff Check-In

All MountainFest staff must check in at Keystone Lodge upon arrival. After confirming any payments and turning in your Annual Medical and Health History you will be issued your wristband, staff shirt, meal tickets, CSP and totem. You will also receive your housing assignment.

Staff Meetings

There will be several staff meetings throughout the weekend to ensure we are prepared for this great event. If you are at the event please make sure to attend.

- Thursday following lunch at Heinz Commissary
- Friday following lunch at Camp Independence dining hall
- Sunday following lunch at Camp Independence dining hall

Vehicle Access

Volunteers need to know that vehicle access to the camps will not be available after 2 p.m. on Friday. The gates will be locked to protect all the participants on foot. If you have to arrive after this time and have equipment to set up for your program you must stop at Keystone Lodge and request assistance from the Logistics Staff. Only in extreme cases will vehicle access be granted. In most cases the Logistics staff will assist you in transporting your materials.

Annual Health and Medical Record

A copy of the BSA health form is required for both youth and adults. The health forms will be collected as part of the check in process. **The health form copies will not be returned to the unit.**

Event Guide

Please make yourself familiar with the event guide and most importantly the version that includes the program maps (available Friday at MountainFest). Have this with you at the event so you can assist participants with questions or directions.

Staff T-Shirt

Each full weekend staff member will receive a MountainFest Staff t-shirt. Select the size of your staff t-shirt. Caution: All shirt sizes are men's sizes. Please wear this at the event to identify yourself to the participants.

Housing

All MountainFest staff will be housed in the summer camp staff areas (tents and cabins, both with electricity) or in the Potomac Homes. This is somewhat dependant on what you will be doing for the weekend as our goal is to house you in the Sub Camp you will be working in to avoid extra travel.

Summer Camp Staffs

Those volunteers who served on summer camp staff at Camp GUYASUTA, Camp SEPH MACK or Heritage Reservation do not need to pay for meals. This is being covered by the summer camp budgets. Please contact Mike Crane to have your credit applied. (412) 325-7921 or michael.crane@scouting.org.

Order of the Arrow

OA Members can register on the staff form for the full weekend or Two-Hours of Service. Those selecting Two Hours of Service are only listing name and contact info and are not selecting shirt size, meals or housing option. They must register through the camper registration.



Meal Service

Meals will be provided in our dining halls at a cost of \$5 per meal starting with breakfast on Thursday and ending with lunch on Sunday. There is no charge for Saturday dinner. If you plan to eat on your own, please be aware that cooking and refrigeration in the camp staff areas is extremely limited. You may need to bring a camp stove and cooler. You will receive meal tickets for each meal you select – make sure to bring these to your meal (No Ticket = No Meal).

Meal Locations

- Thursday breakfast to Friday breakfast will be served at Heinz Commissary, near Keystone Lodge
- Friday lunch will be served at the Camp Independence dining hall
- Friday dinner will be delivered to the area you are working in. Please have your ticket with you.
- Saturday meals and Sunday breakfast will be served in the Independence and Freedom dining halls. If you are in the Liberty or Freedom sub camps please eat at Freedom. Central and Independence eat at Independence.
- Saturday lunch for program staff will be delivered to your program area unless you are close to a dining hall.
- Sunday lunch will be in the Camp Independence dining hall.

Meal Times

With the exception of meals served while campers are at MountainFest, meals will be at the following times.

- Breakfast 8 a.m.
- Lunch 12:30 p.m.
- Dinner 6 p.m.

Staff Menu

Thursday

- Breakfast: Pancakes, syrup, sausage, cereal, juice, milk, coffee
- Lunch: Grilled cheese, tomato soup, Fritos, fruit, drinks
- Dinner: Baked chicken breast marinated in Italian Dressing, parsley red skin potatoes, vegetable, rolls, pudding, drinks

Friday

- Breakfast: Scrambled eggs, bacon, toast, cereal, juice, milk, coffee
- Lunch: 2 Hot Dogs, chili & cheese on the side, baked beans, tater tots, fruit, drinks
- Dinner: Boxed lunch, sandwich, chips, fruit, cookie, drinks

Sunday

- Lunch: Chicken filet sandwich, french fries, sides for the sandwiches, fruit, cookies, drinks

MountainFest Program Listing and Locations

Day	Event	Map	Location	CS	BS	V	Day	Event	Map	Location	CS	BS	V
	Dive Team	F-1	Aquatics	X	X	X		Broomball	I-11	Courts	X	X	X
	Fly Fishing	F-2	Floating Bridge		X	X		Dodgeball	I-11	Courts	X	X	X
	Ultimate Frisbee	F-6	Flag Field	X	X	X		Fitness Test	I-13	UPMC Fit Trail	X	X	X
	GPS	F-7	Quartermaster		X	X		Patch Trading	I-14	Trading Post	X	X	X
	Horseshoes	F-7	Quartermaster		X	X		64' Climb Challenge	I-16	Flag Field	X		
	Mountain Boarding	F-10	Hill		X	X		Alka Seltzer Rockets	I-16	Flag Field	X		
	Amazing Race	I-1	Discovery		X	X		Bottle Rockets	I-16	Flag Field	X	X	X
	Climbing Tower	I-1	Discovery		X	X		Frisbee Golf	I-16	Flag Field	X	X	X
	Mountain Biking	I-1	Discovery		X	X		Giant Skiis	I-16	Flag Field	X	X	X
	Rapelling	I-1	Discovery		X	X		Sports Combo	I-16	Flag Field	X		
	Shotgun Shooting	I-1	Discovery		X	X		Tug O War	I-16	Flag Field	X	X	X
	Water Slingshot	I-2	USS Constitution	X	X	X		Wipeout Slide	I-16	Flag Field	X		
	Canoeing	I-3	Aquatics	X	X	X		Basketry	I-18	Keystone Lodge		X	X
	Funyaks	I-3	Aquatics	X				Leatherwork	I-18	Keystone Lodge		X	X
	Huck Finn	I-3	Aquatics	X	X	X		Woodcarving	I-18	Keystone Lodge		X	X
	Kayaking	I-3	Aquatics		X	X		Raingutter Regatta	I-19	Nature Shelter	X		
	Rowing	I-3	Aquatics	X	X	X		Seed Bombs	I-19	Nature Shelter	X		
	Swimming	I-3	Aquatics	X	X	X		Soap Carving	I-19	Nature Shelter	X		
	Archery	I-4	Handicraft Field	X	X	X		Ambulance	I-20	Ball Field	X	X	X
	Mobile Climbing Wall	I-4	Handicraft Field	X				Bushy Run BF	I-20	Ball Field			
	Leather Totem	I-4	Handicraft	X	X	X		Medical Helicopter	I-20	Ball Field	X	X	X
	Baseball Bowling	I-6	Pathfinder Field	X	X	X		National Guard	I-20	Ball Field	X	X	X
	Conk the Crow	I-6	Pathfinder Field	X				Ultimate Frisbee	I-20	Ball Field	X	X	X
	Feed the Monkey	I-6	Pathfinder Field	X				UPMC SMART Unit	I-20	Ball Field	X	X	X
	Flying Monkey Fling	I-6	Pathfinder Field	X	X	X		Vintage Cars	I-20	Ball Field			
	Froggy Fling	I-6	Pathfinder Field	X				Volleyball	I-21	Volleyball court	X	X	X
	Meteor Bowling	I-6	Pathfinder Field	X	X	X		Cub Scout GPS	I-22	Program Hall	X		
	Zyclone Ring Shoot	I-6	Pathfinder Field	X	X	X		Tie Dying	I-22	Program Hall	X	X	X
	Wii Sports Resort	I-7	Pathfinder A	X	X	X		Pistol Shooting	I-23	Range			X
	Ping Pong	I-7	Pathfinder C	X	X	X		Rifle Shooting	I-23	Range		X	X
	Pool Table	I-7	Pathfinder C	X	X	X		3-Man Slingshot	I-24	Range	X	X	X
	Disability Awareness	I-7	Pathfinder Dining	X	X	X		BB Gun Shooting	I-25	Range	X		
	Falling Water	I-7	Pathfinder Dining	X	X	X		Action Archery	I-26	Range	X	X	X
	Ft. Necessity	I-7	Pathfinder Dining	X	X	X		Rock Throwing	I-28	Range	X	X	x
	Historical Dispplay	I-7	Pathfinder Dining	X	X	X		Slingshot Range	I-28	Range	X	X	X
	Laurel Caverns	I-7	Pathfinder Dining	X	X	X		Canoeing	L-1	Aquatics	X	X	X
	Visitor Bureau	I-7	Pathfinder Dining	X	X	X		Kayaking	L-1	Aquatics		X	X
	Patch Display	I-7	Pathfinder Dining	X	X	X		Rowing	L-1	Aquatics	X	X	X
	Religious Emblems	I-7	Pathfinder Dining	X	X	X		Sailing	L-1	Aquatics		X	X
	Special Needs	I-7	Pathfinder Dining	X	X	X		Swimming	L-1	Aquatics	X	X	X
	Wilderness Voyagers	I-7	Pathfinder Dining	X	X	X		Leather Totem	L-2	Handicraft	X	X	X
	BMX	I-8	BMX Track	X				Cooking Demo	L-3	Scoutcraft	X	X	X
	Sponge Wars	I-9	Fort Washington	X				Fire Building	L-3	Scoutcraft		X	X
	Cub Mobiles	I-10	Potomac Road	X				Patch Trading	L-4	Trading Post	X	X	X
	Basketball	I-11	Courts	X	X	X		Order of the Arrow	L-5	Program Hall		X	
	Broomball	I-11	Courts	X	X	X		3D Printer	L-6	Commissary		X	X

MountainFest Program Listing and Locations

Day Event	Map	Location	CS	BS	V
Tomahawk Throwing	L-6	Commissary		X	X
Down & Under	L-7	Flag Field		X	X
Gladiator Jousting	L-7	Flag Field		X	X
Bungee Run	L-7	Flag Field		X	X
Tug O War	L-7	Flag Field	X	X	X
Velcro Wall	L-7	Flag Field		X	X
Lashing	L-8	Staff Field		X	X
Orienteering	L-8	Staff Field		X	X
Wii Sports Resort	L-8	Staff Dining Hall	X	X	X
Survival Cord Craft	L-9	Nature Shelter		X	X
Woodcarving	L-9	Nature Shelter		X	X
Project COPE	L-10	Cope Course		X	X
Archery	L-11	Range		X	X
Rifle Shooting	L-11	Range		X	X

Evening Program	Map	Location	CS	BS	V
Inter-Faith Service	F-3	Nature Shelter	X	X	X
Jewish Service	F-8	Program Hall	X	X	X
Arena Show	F-10	Hill	X	X	X
Protestant Service	F-10	Hill	X	X	X
T-Shirt Launcher	F-10	Hill	X	X	X
Catholic Service	F-11	Dining Hall	X	X	X

Map Key

F = Camp Freedom Map
I = Camp Independence Map
L = Camp Liberty Map

CS = Cub Scout Activity
BS = Boy Scout Activity
V = Venturing Activity

MountainFest Schedule

Friday

2 - 10 p.m.	Arrival, check-in, campsite setup (no Friday dining hall meals)
4 - 10 p.m.	Trading Posts open
10 p.m.	Quiet hours until 7 a.m.
12 a.m.	Lights Out

Saturday

7 - 9 a.m.	Breakfast in dining halls
7:30 a.m.	Saturday Participant arrival and check-in at Keystone
8:00 a.m.	Bus Service Begins
8:30 a.m.	Trading Posts Open
9 a.m. - 4:30 p.m.	Program areas open in Liberty and Independence
11 a.m. - 1 p.m.	Lunch in dining halls

Saturday Continued

3 - 6 p.m.	OA Elections
5 - 7 p.m.	Dinner in dining halls
5:30 - 7:15 p.m.	Catch the bus to Camp Freedom for Religious Service and the Arena Show
7:30 p.m.	Religious Services
8:00 p.m.	Arena Show
10 p.m.	Return to campsites
10 p.m.	Quiet Hours until 7 a.m.
12 a.m.	Lights Out

Sunday

7 - 9 a.m.	Breakfast in dining halls
7:30 - 10 a.m.	Trading Posts Open
7:30 - 10 a.m.	Pack up, clean campsite, check out, departure

MountainFest Logistics Listing and Locations

Services	Map	Location
Bus Stop to Liberty	I-17	Keystone
Bus Stop to Independence	L-12	Lower Lot
First Aid Station	I-18	Keystone Lodge
First Aid Station	I-22	Program Hall
First Aid Station	L-5	Program Hall
First Aid Station (Arena Show)	F-11	Dining Hall
Gear Drop Off - Independence	I-27	Upper Lot
Gear Drop Off - Liberty	L-12	Lower Lot
Meal Service	F-11	Dining Hall
Meal Service	I-15	Dining Hall
HQ - Liberty Sub Camp	L-5	Program Hall
HQ - MountainFest	I-18	Keystone Lodge
HQ - Independence Sub Camp	I-22	Program Hall
Trading Post / Camp Store	I-7	Pathfinder
Trading Post / Camp Store	I-14	Trading Post
Trading Post / Camp Store	L-4	Trading Post

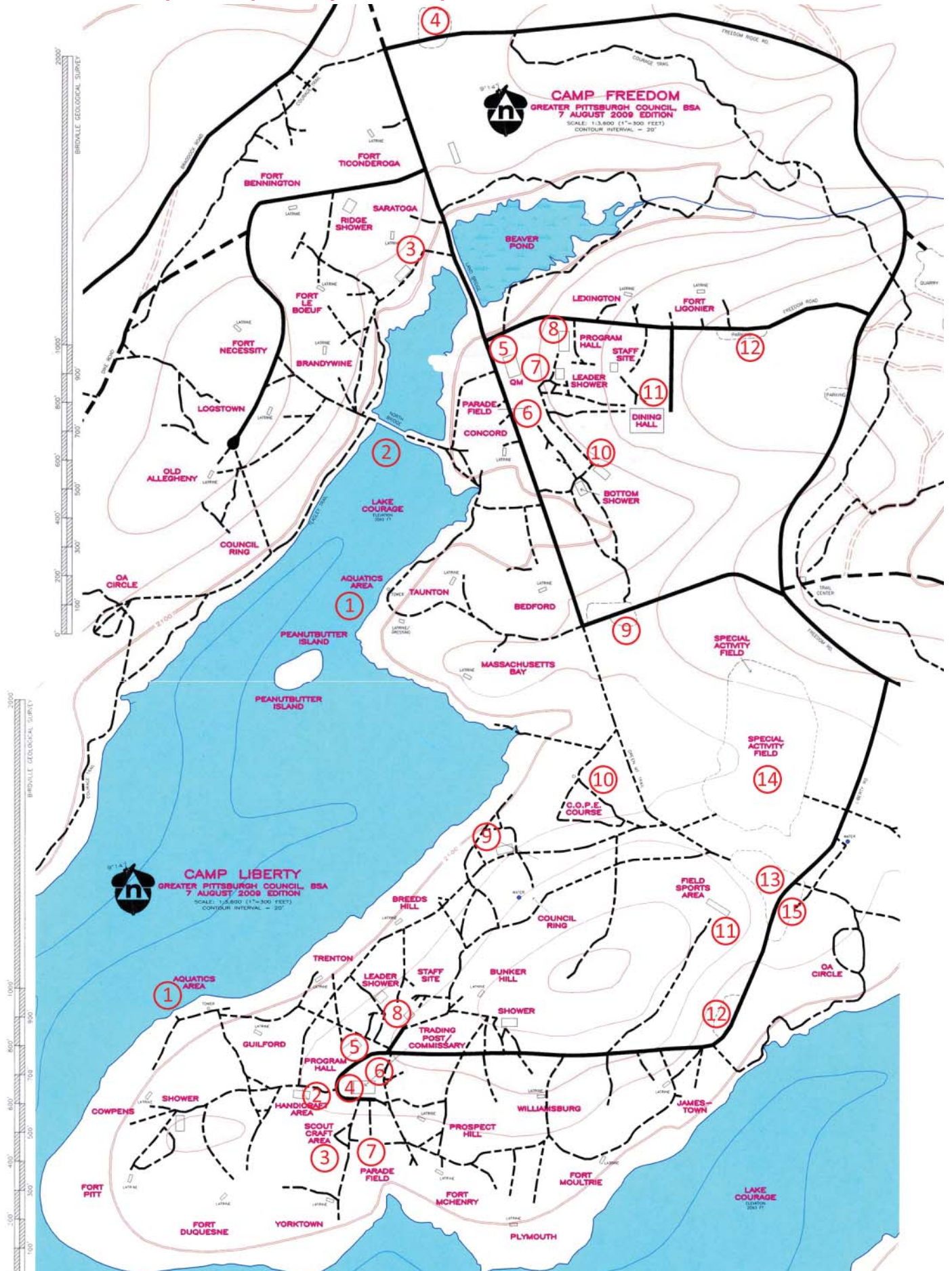
Restrooms

Restrooms	Map	Location
Port-a-Potty	F-10	Hill
Flush Toilets	F-11	Dining Hall
Port-a-Potty	I-2	USS Constitution
Port-a-Potty	I-3	Aquatics
Flush Toilets	I-7	Pathfinder
Flush Toilets	I-15	Dining Hall
Flush Toilets	I-18	Keystone
Port-a-Potty	I-27	Upper Lot
Port-a-Potty	L-1	Aquatics
Port-a-Potty	L-6	Commissary
Port-a-Potty	L-10	Cope Course
Port-a-Potty	L-11	Range
Port-a-Potty	L-13	Upper Lot
Pit Latrine		Every Campsite

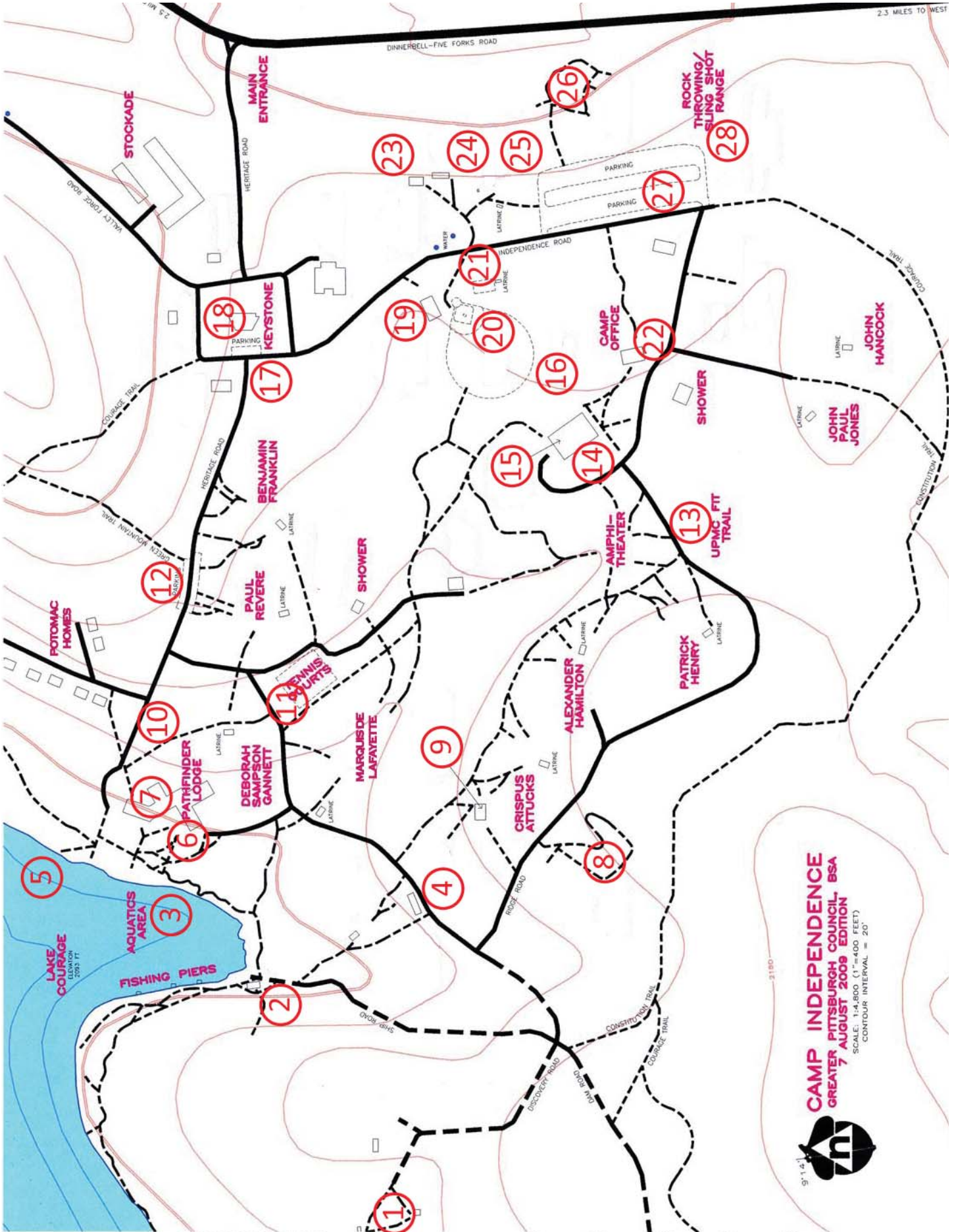
Parking

Parking	Map	Location
Trailers	I-12	Lower Lot
Trailers	I-27	Upper Lot
Trailers	L-15	Side Lot
Vehicles	F-4	Ridge Lot
Vehicles	F-9	Lower Lot
Vehicles	F-12	Middle Lot
Vehicles	I-10	Potomac Road
Vehicles	I-12	Lower Lot
Vehicles	I-18	Keystone Field
Vehicles	I-27	Upper Lot
Vehicles	L-13	Upper Lot
Vehicles	L-14	Overflow

MountainFest Maps: Camp Liberty and Camp Freedom



MountainFest Maps: Camp Independence



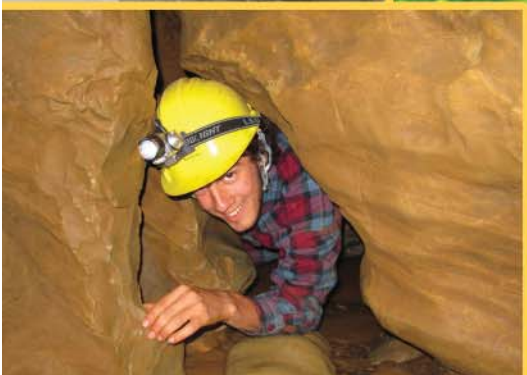
CAMP INDEPENDENCE
 GREATER PITTSBURGH COUNCIL, BSA
 7 AUGUST 2009 EDITION
 SCALE: 1"=4,000' (1"=400 FEET)
 CONTOUR INTERVAL = 20'





Heritage Reservation

Summer Adventure 2012



The summer camping destination of the Boy Scouts of America, Laurel Highlands Council, Heritage Reservation is home to Camp Independence serving Cub Scouts and Webelos, Camp Freedom and Camp Liberty serving Boy Scouts and Eagle Base offering high adventure to older Boy Scouts and Venturers. Summer programs run mid-June to mid-August.

What is Camp Independence?

Camp Independence is the premier Cub Scout and Webelos summer resident camping destination. By allowing our unique annual theme to take complete control we deliver a program allowing challenge, creativity, adventure and learning. We provide many advancement opportunities that take advantage of our beautiful outdoor settings. We offer a variety of sessions from three to five days from mid-June to mid-August.

What is Camp Freedom?

Camp Freedom is our Boy Scout resident camp with a 450-seat dining hall serving family style meals. Scouts stay a period of six days and have an opportunity to participate in a plethora of activities and advancements in our eight program areas.

What is Camp Liberty?

Camp Liberty is our Boy Scout resident camp that focuses on the patrol method. Scouts prepare their own meals as patrols in the campsite. The ingredients are provided by camp and picked up from the commissary. Scouts stay a period of six days and have an opportunity to participate in a plethora of activities and advancements in our eight program areas.

What is Eagle Base?

Eagle Base is our coed high adventure base for Boy Scouts and Venturers 13 years and older. Crews of 12 are formed from representatives of one or several units. Using Valley Forge as a base camp, crews prepare their own meals using trail equipment and ingredients delivered to the site. Camping and program equipment is provided and each participant only needs to bring his/her personal belongings. Crews select and participate in five highlight activities during the day and have the evening to relax or try our evening activities.

Activities at Heritage Age and Camp Dependent

- Archery
- BB Gun shooting
- Belt loops
- Bouldering
- Black Powder Rifles
- BMX Biking
- Canoeing
- Campfires
- Camping
- Camp Games
- Caving
- Climbing
- Emergency Prep
- First Aid
- Fishing
- Fly Fishing
- Huck Finn Raft
- Hiking
- Kayaking
- Leatherwork
- Leave No Trace
- Lifesaving
- Mammals
- Mountain Biking
- Motor boating
- Nature
- Outdoor cooking
- Patrol activities
- Peddle / Paddle
- Pioneering
- Pistol shooting
- Photography
- Pontoon Fishing
- Project C.O.P.E.
- Rappelling
- Rifle shooting
- Rock range
- Rock Climbing
- Rowing
- Sailing
- Service projects
- Shotgun Slingshots
- Snorkeling
- Sponge War
- Sporting Clays
- Sunset Kayak
- Swimming
- Trail Biking
- Water Skiing
- Webelos Pins
- Whittling Chip
- Woodcarving
- Zip Line
- Fun, Fun and more Fun!

Book Your Adventure Now!

To learn more about the summer adventures at Heritage Reservation visit our website or talk with your unit leader. www.heritagereservation.org